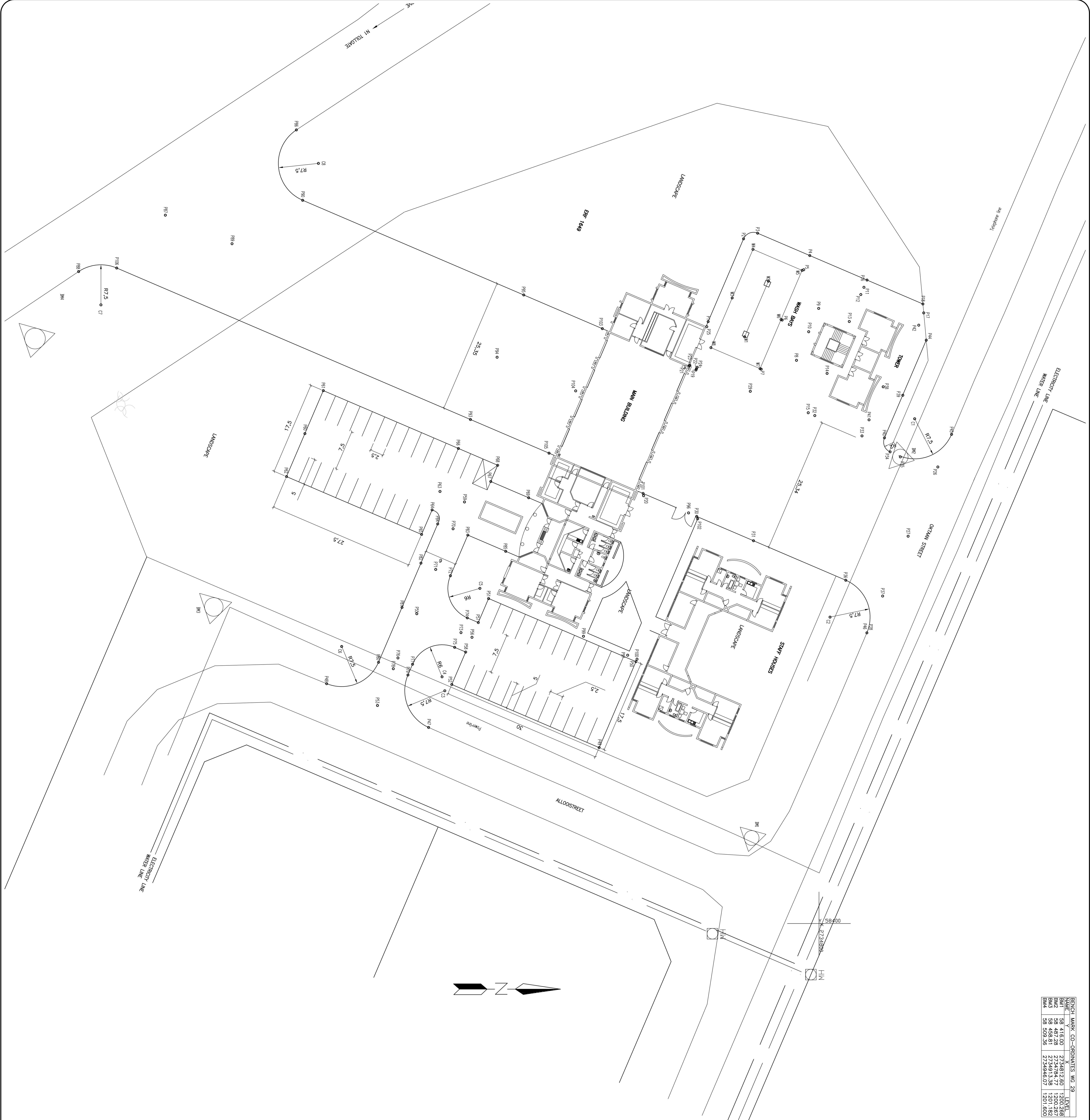


POINT NAME	CO-ORDINATES	WG	ZR	LEVEL
BM1	2734812.60	1200	289	
BM2	2734813.28	1201	182	
BM3	2734813.28	1201	182	
BM4	2734846.07	1201	600	

NUMBER	SETTING OUT CO-ORDINATES	WG	ZR
P1	5067.2396	2734807.738	X
P2	5067.2396	2734807.738	X
P3	5067.2396	2734807.738	X
P4	5067.2396	2734807.738	X
P5	5067.2396	2734807.738	X
P6	5067.2396	2734807.738	X
P7	5067.2396	2734807.738	X
P8	5067.2396	2734807.738	X
P9	5067.2396	2734807.738	X
P10	5067.2396	2734807.738	X
P11	5067.2396	2734807.738	X
P12	5067.2396	2734807.738	X
P13	5067.2396	2734807.738	X
P14	5067.2396	2734807.738	X
P15	5067.2396	2734807.738	X
P16	5067.2396	2734807.738	X
P17	5067.2396	2734807.738	X
P18	5067.2396	2734807.738	X
P19	5067.2396	2734807.738	X
P20	5067.2396	2734807.738	X
P21	5067.2396	2734807.738	X
P22	5067.2396	2734807.738	X
P23	5067.2396	2734807.738	X
P24	5067.2396	2734807.738	X
P25	5067.2396	2734807.738	X
P26	5067.2396	2734807.738	X
P27	5067.2396	2734807.738	X
P28	5067.2396	2734807.738	X
P29	5067.2396	2734807.738	X
P30	5067.2396	2734807.738	X
P31	5067.2396	2734807.738	X
P32	5067.2396	2734807.738	X
P33	5067.2396	2734807.738	X
P34	5067.2396	2734807.738	X
P35	5067.2396	2734807.738	X
P36	5067.2396	2734807.738	X
P37	5067.2396	2734807.738	X
P38	5067.2396	2734807.738	X
P39	5067.2396	2734807.738	X
P40	5067.2396	2734807.738	X
P41	5067.2396	2734807.738	X
P42	5067.2396	2734807.738	X
P43	5067.2396	2734807.738	X
P44	5067.2396	2734807.738	X
P45	5067.2396	2734807.738	X
P46	5067.2396	2734807.738	X
P47	5067.2396	2734807.738	X
P48	5067.2396	2734807.738	X
P49	5067.2396	2734807.738	X
P50	5067.2396	2734807.738	X
P51	5067.2396	2734807.738	X
P52	5067.2396	2734807.738	X
P53	5067.2396	2734807.738	X
P54	5067.2396	2734807.738	X
P55	5067.2396	2734807.738	X
P56	5067.2396	2734807.738	X
P57	5067.2396	2734807.738	X
P58	5067.2396	2734807.738	X
P59	5067.2396	2734807.738	X
P60	5067.2396	2734807.738	X
P61	5067.2396	2734807.738	X
P62	5067.2396	2734807.738	X
P63	5067.2396	2734807.738	X
P64	5067.2396	2734807.738	X
P65	5067.2396	2734807.738	X
P66	5067.2396	2734807.738	X
P67	5067.2396	2734807.738	X
P68	5067.2396	2734807.738	X
P69	5067.2396	2734807.738	X
P70	5067.2396	2734807.738	X
P71	5067.2396	2734807.738	X
P72	5067.2396	2734807.738	X
P73	5067.2396	2734807.738	X
P74	5067.2396	2734807.738	X
P75	5067.2396	2734807.738	X
P76	5067.2396	2734807.738	X
P77	5067.2396	2734807.738	X
P78	5067.2396	2734807.738	X
P79	5067.2396	2734807.738	X
P80	5067.2396	2734807.738	X
P81	5067.2396	2734807.738	X
P82	5067.2396	2734807.738	X
P83	5067.2396	2734807.738	X
P84	5067.2396	2734807.738	X
P85	5067.2396	2734807.738	X
P86	5067.2396	2734807.738	X
P87	5067.2396	2734807.738	X
P88	5067.2396	2734807.738	X
P89	5067.2396	2734807.738	X
P90	5067.2396	2734807.738	X
P91	5067.2396	2734807.738	X
P92	5067.2396	2734807.738	X
P93	5067.2396	2734807.738	X
P94	5067.2396	2734807.738	X
P95	5067.2396	2734807.738	X
P96	5067.2396	2734807.738	X
P97	5067.2396	2734807.738	X
P98	5067.2396	2734807.738	X
P99	5067.2396	2734807.738	X
P100	5067.2396	2734807.738	X

NUMBER	SETTING OUT CO-ORDINATES	WG	ZR
P101	5067.2396	2734807.738	X
P102	5067.2396	2734807.738	X
P103	5067.2396	2734807.738	X
P104	5067.2396	2734807.738	X
P105	5067.2396	2734807.738	X
P106	5067.2396	2734807.738	X
P107	5067.2396	2734807.738	X
P108	5067.2396	2734807.738	X
P109	5067.2396	2734807.738	X
P110	5067.2396	2734807.738	X
P111	5067.2396	2734807.738	X
P112	5067.2396	2734807.738	X
P113	5067.2396	2734807.738	X
P114	5067.2396	2734807.738	X
P115	5067.2396	2734807.738	X
P116	5067.2396	2734807.738	X
P117	5067.2396	2734807.738	X
P118	5067.2396	2734807.738	X
P119	5067.2396	2734807.738	X
P120	5067.2396	2734807.738	X
P121	5067.2396	2734807.738	X
P122	5067.2396	2734807.738	X
P123	5067.2396	2734807.738	X
P124	5067.2396	2734807.738	X
P125	5067.2396	2734807.738	X
P126	5067.2396	2734807.738	X
P127	5067.2396	2734807.738	X
P128	5067.2396	2734807.738	X
P129	5067.2396	2734807.738	X
P130	5067.2396	2734807.738	X
P131	5067.2396	2734807.738	X
P132	5067.2396	2734807.738	X
P133	5067.2396	2734807.738	X
P134	5067.2396	2734807.738	X
P135	5067.2396	2734807.738	X
P136	5067.2396	2734807.738	X
P137	5067.2396	2734807.738	X
P138	5067.2396	2734807.738	X
P139	5067.2396	2734807.738	X
P140	5067.2396	2734807.738	X
P141	5067.2396	2734807.738	X
P142	5067.2396	2734807.738	X
P143	5067.2396	2734807.738	X
P144	5067.2396	2734807.738	X
P145	5067.2396	2734807.738	X
P146	5067.2396	2734807.738	X
P147	5067.2396	2734807.738	X
P148	5067.2396	2734807.738	X
P149	5067.2396	2734807.738	X
P150	5067.2396	2734807.738	X
P151	5067.2396	2734807.738	X
P152	5067.2396	2734807.738	X
P153	5067.2396	2734807.738	X
P154	5067.2396	2734807.738	X
P155	5067.2396	2734807.738	X
P156	5067.2396	2734807.738	X
P157	5067.2396	2734807.738	X
P158	5067.2396	2734807.738	X
P159	5067.2396	2734807.738	X
P160	5067.2396	2734807.738	X
P161	5067.2396	2734807.738	X
P162	5067.2396	2734807.738	X
P163	5067.2396	2734807.738	X
P164	5067.2396	2734807.738	X
P165	5067.2396	2734807.738	X
P166	5067.2396	2734807.738	X
P167	5067.2396	2734807.738	X
P168	5067.2396	2734807.738	X
P169	5067.2396	2734807.738	X
P170	5067.2396	2734807.738	X
P171	5067.2396	2734807.738	X
P172	5067.2396	2734807.738	X
P173	5067.2396	2734807.738	X
P174	5067.2396	2734807.738	X
P175	5067.2396	2734807.738	X
P176	5067.2396	2734807.738	X
P177	5067.2396	2734807.738	X
P178	5067.2396	2734807.738	X
P179	5067.2396	2734807.738	X
P180	5067.2396	2734807.738	X
P181	5067.2396	2734807.738	X
P182	5067.2396	2734807.738	X
P183	5067.2396	2734807.738	X
P184	5067.2396	2734807.738	X
P185	5067.2396	2734807.738	X
P186	5067.2396	2734807.738	X
P187	5067.2396	2734807.738	X
P188	5067.2396	2734807.738	X
P189	5067.2396	2734807.738	X
P190	5067.2396	2734807.738	X
P191	5067.2396	2734807.738	X
P192	5067.2396	2734807.738	X
P193	5067.2396	2734807.738	X
P194	5067.2396	2734807.738	X
P195	5067.2396	2734807.738	X
P196	5067.2396	2734807.738	X
P197	5067.2396	2734807.738	X
P198	5067.2396	2734807.738	X
P199	5067.2396	2734807.738	X
P200	5067.2396	2734807.738	X

NAME	Y	X
C1	5067.2396	2734807.738
C2	5067.2396	2734807.738
C3	5067.2396	2734807.738
C4	5067.2396	2734807.738
C5	5067.2396	2734807.738
C6	5067.2396	2734807.738
C7	5067.2396	2734807.738
C8	5067.2396	2734807.738



FOR CONSTRUCTION

NOTES  
1. DRAWINGS SHALL BE READ IN CONJUNCTION WITH ARCHITECT'S DRAWINGS AND ANY DISCREPANCIES MUST BE REPORTED IMMEDIATELY.

NO.	DATE	REVISION	DESCRIPTION
0	09/09/2008	T.U.	ISSUED FOR CONSTRUCTION

CLIENT	WATERBERG DISTRICT MUNICIPALITY
ARCHITECT	PRISM ARCHITECTS (Pty) Ltd. P. O. Box 4228, Rosebank, 0700. Bendor, Rosebank 0699 (011) 292 427. E: info@prism.co.za P: 011 292 4272 F: 011 292 4273 P: 011 292 4274 P: 011 292 4275 P: 011 292 4276 P: 011 292 4277 P: 011 292 4278 P: 011 292 4279 P: 011 292 4280 P: 011 292 4281 P: 011 292 4282 P: 011 292 4283 P: 011 292 4284 P: 011 292 4285 P: 011 292 4286 P: 011 292 4287 P: 011 292 4288 P: 011 292 4289 P: 011 292 4290 P: 011 292 4291 P: 011 292 4292 P: 011 292 4293 P: 011 292 4294 P: 011 292 4295 P: 011 292 4296 P: 011 292 4297 P: 011 292 4298 P: 011 292 4299 P: 011 292 4300
PROJECT	MODIMOLLE MUNICIPALITY PROPOSED NEW DISASTER MANAGEMENT CENTRE AND FIRE STATION
TITLE	GEOMETRICAL LAYOUT
DESIGNED BY	T. UNIBEDT
DRAWN BY	T. UNIBEDT
CHECKED BY	W. DOOS
DATE	17 February 2008
APPROVED BY	S. WARTZ
DWG No	W101188-05-A
REVISION	0

**AFRICON™**  
TEL: (012) 427 2000  
FAX: (012) 427 2010  
www.africon.co.za

**AFRICON CENTRE**  
1046 BENNETT STREET  
0001  
0002  
0003  
0004  
0005  
0006  
0007  
0008  
0009  
0010  
0011  
0012  
0013  
0014  
0015  
0016  
0017  
0018  
0019  
0020  
0021  
0022  
0023  
0024  
0025  
0026  
0027  
0028  
0029  
0030  
0031  
0032  
0033  
0034  
0035  
0036  
0037  
0038  
0039  
0040  
0041  
0042  
0043  
0044  
0045  
0046  
0047  
0048  
0049  
0050  
0051  
0052  
0053  
0054  
0055  
0056  
0057  
0058  
0059  
0060  
0061  
0062  
0063  
0064  
0065  
0066  
0067  
0068  
0069  
0070  
0071  
0072  
0073  
0074  
0075  
0076  
0077  
0078  
0079  
0080  
0081  
0082  
0083  
0084  
0085  
0086  
0087  
0088  
0089  
0090  
0091  
0092  
0093  
0094  
0095  
0096  
0097  
0098  
0099